

T&T Systems

ProfiPlug

Modbus/Profibus gateway

Exchanging data among subnets using different communication protocols is often a difficult problem.

In this context T&T Systems offers “Profiplug”, a compact and cheap device able to read data from Modbus slave devices and to make them available on a Profibus network.



T&T Systems

Via Natale Battaglia n.27
20127 Milano

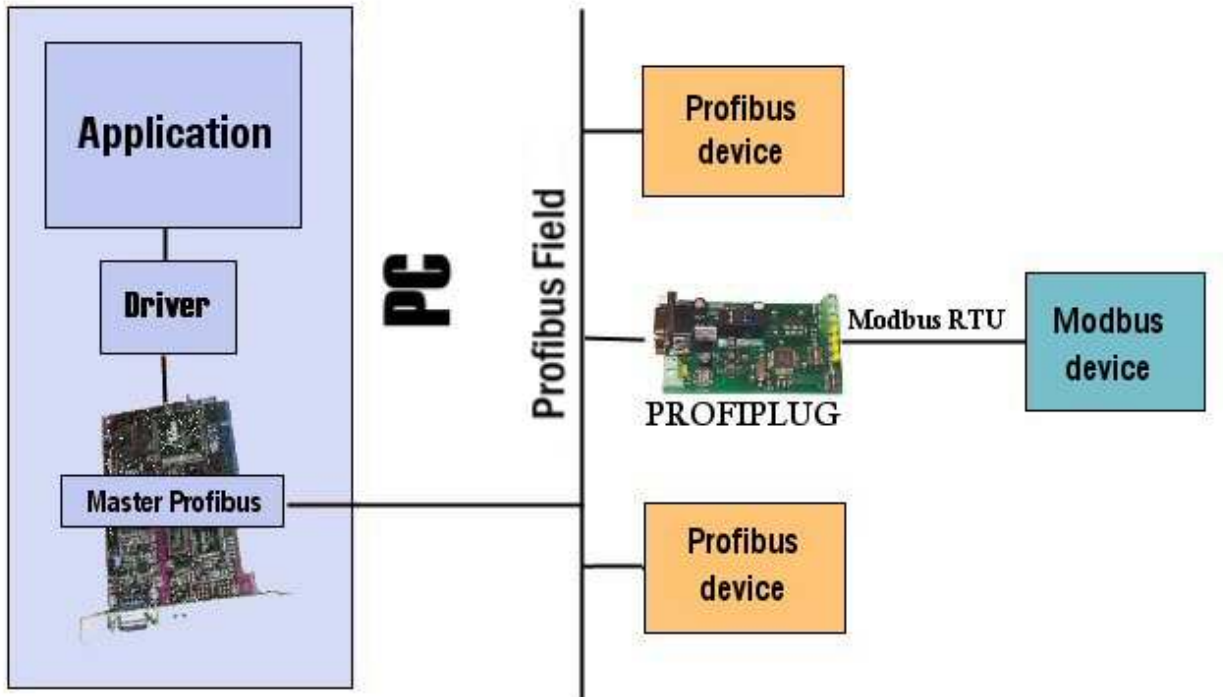
Tel: +39 02 28970440

Fax: +39 02 2871305

Email: tetsys@tetsys.it

What is ProfiPlug?

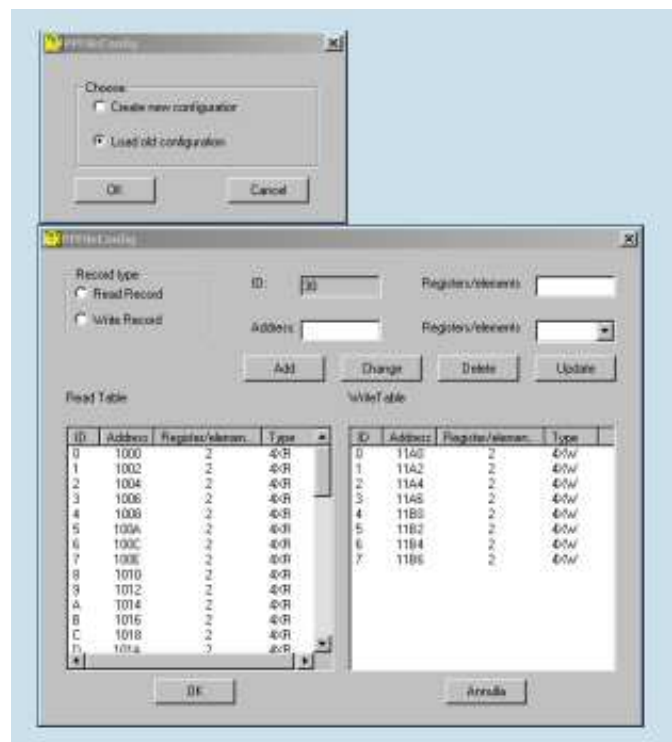
“Profiplug” is a device projected and produced by T&T Systems. It converts transmitted data from devices in MODBUS RTU standard into data in Profibus DP standard, enabling the access of measurement results into Profibus DP network.



High spots of the device are:

- Small size
- Easy to install and to use
- Cheapness

ProfiPlug is provided with a user-friendly configuration software. A step by step procedure allows an easy and fast connection with a wide range of Modbus RTU slave devices



How does ProfiPlug work?

ProfiPlug gets required data from a Modbus RTU slave device, storing them and making them available to the Profibus Master. This one cyclically takes those data and makes them available for the high level software. Moreover the ProfiPlug is able to send some data (e.g. configuration parameters) from the master to the slave device.

The communication engines (both Profibus and Modbus) are completely independent; in this way the performance of the Profibus side is not limited by the lower speed of the Modbus side.

Technical Details

COMMUNICATION PROFIBUS SIDE

ProfibusDP connection:

Interface:	9-pin D-sub connector (female)	Communication mode:	Profibus DP
Transfer Method:	RS-485 Half Duplex	Address:	1 to 126
Transfer Cable:	Shielded twisted pair	Baud Rate:	9.6 to 93.75 kBaud
Electrical Insulation:	Optoisolated		

COMMUNICATION MODBUS SIDE

Modbus Connection RS232:

Interface:	Vertical Connecting Terminal pitch 5.08mm
Transfer Method:	RS-232, Half Duplex
Transfer Cable:	3 wire (Tx, Rx and Signal ground)
Electrical Insulation:	N.A.
Address:	1 to 246
Baud Rate:	9.6 to 38.4 kBaud

Modbus Connection RS485:

Interface:	Vertical Connecting Terminal pitch 5.08 mm
Transfer Method:	RS-485, Half Duplex
Transfer Cable:	3 wire (A, B and signal ground)
Electrical Insulation:	N.A.

SW/HW DETAILS

Processor: HC S08	Flash: 60kByte	Power Supply: 24V dc/ac
Internal RAM: 4 kByte	Firmware: refreshable by BDM	

Size

Version for fixing screws	8.6 x 6.3 x 1.5 Cm
Version for DIN BN 50022 rail mounting	conforms to DIN 43880 3 modules wide. 8.95 x 5.25 x 6.9 Cm

T&T Systems

HEADQUARTER	I-20129 Milano, via Plinio 1
--------------------	------------------------------

BUREAU	I-20127 Milano, via Natale Battaglia, 27
---------------	---

PHONE	+39 02 28970440
--------------	-----------------

FAX	+39 02 2871305
------------	----------------

TAX ID. NUMBER	12539930151
-----------------------	-------------

EMAIL	tetsys@tetsys.it
--------------	--